



Slurry pumping solutions

WX(R)

WXA(R)

Heavy Duty Slurry Pump

Mining | Power Plant | Coal | Metallurgy | Chemical



TYPICAL APPLICATIONS

Usage of versatile wear-resistant and corrosion-resistant materials allows WX(R)/ WXA(R) series slurry pumps to service in various industries, such as mining mill discharge, delivery of tailings, ash removal in power plant, FGD and coal washing in coal plant, etc., resulting in low operating cost, as well as minimized maintenance and down time.

Mineral processing

Rigid structural design and usage of hard wear-resistant material and rubber, together with low running speed, allows WX(R) / WXA(R) Series slurry pumps for wide application in this area, especially suitable for mill discharge in coarse grinding of mineral and tailing delivery.

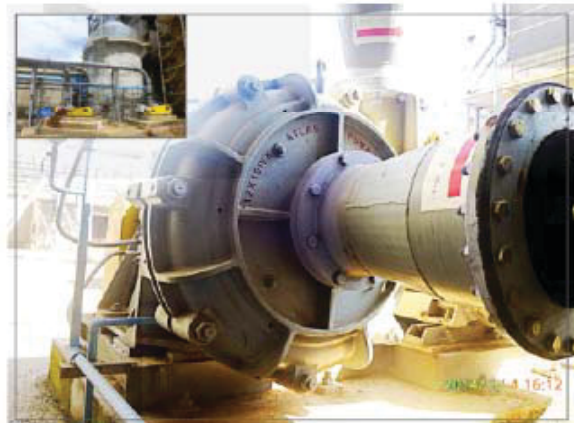


Chemical industry

Usage of versatile wear-resistant and corrosion-resistant metal and rubber, together with mechanical seal, allows the WX(R) / WXA(R) Series slurry pumps' wide applications in this area.

Flue Gas Desulphurization (FGD)

Usage of wear-resistant and corrosion-resistant metal and rubber, which are specially developed for the corrosive slurries containing chloride ion, allows the wide applications of the WX(R)/ WXA(R) Series slurry pumps in this area.



Coal washing

In the process of coal washing, WX(R) / WXA(R) Series slurry pumps are widely used in delivery of high abrasive heavy media and concentrated underflow media.

Metallurgy

Usage of versatile wear-resistant materials and abrasive structural design, along with special cooling system, ensures the bearings to run at low temperature while delivering high temperature media, allowing its wide applications in delivery of steel slag and clinker.

