

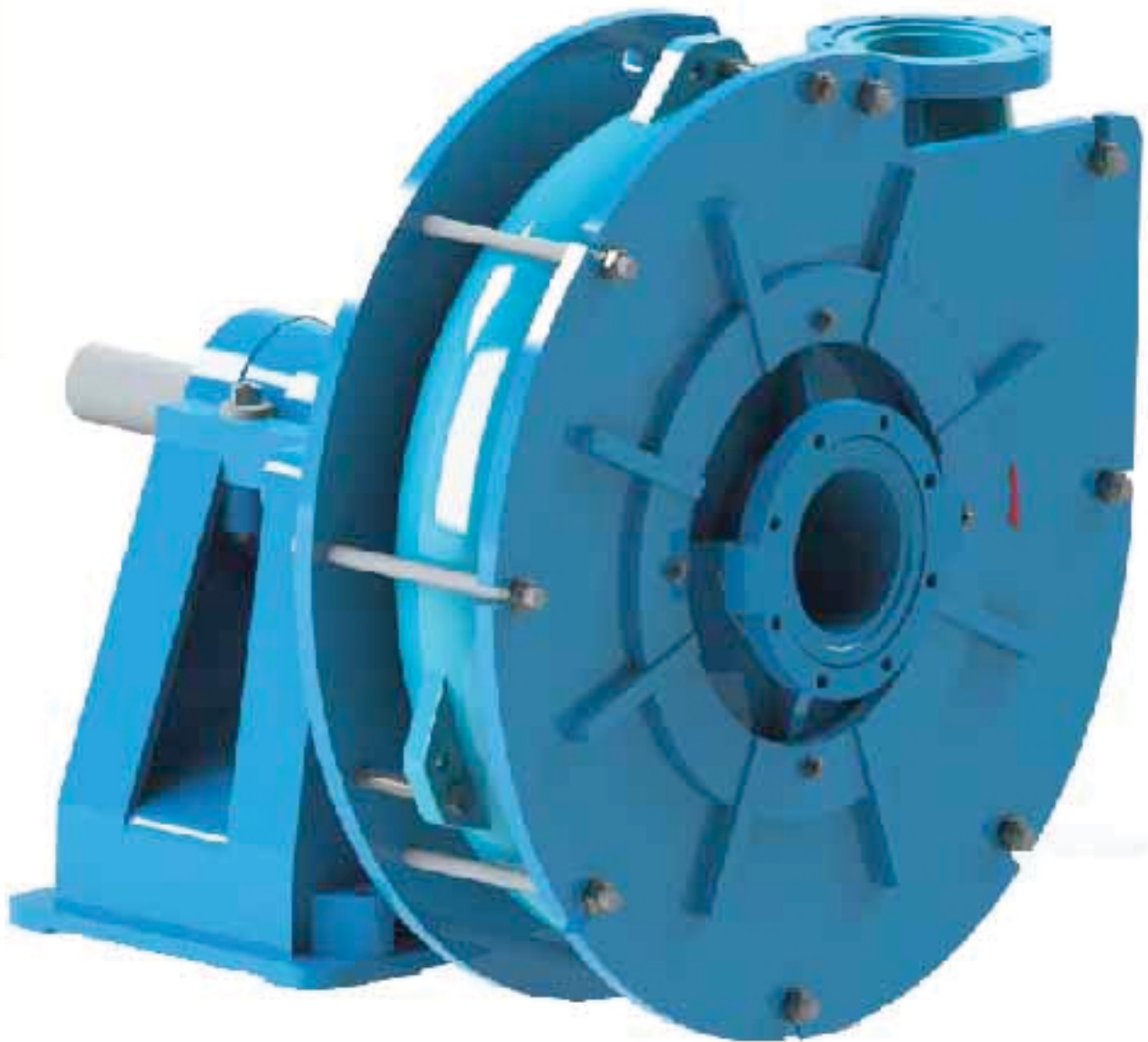


VERSA[®] PUMP
VERSA PUMP

WG(H)
Gravel pump

Slurry pumping solutions

Mining | Coal | Metallurgy | Dredging

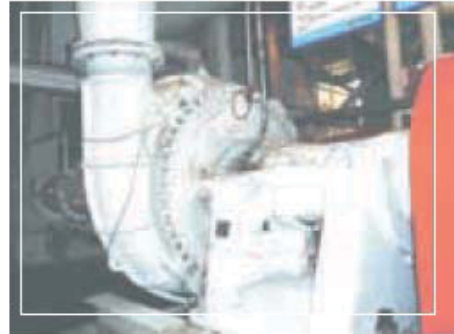


TYPICAL APPLICATIONS

Usage of versatile wear-resistant and corrosion-resistant materials allows WG Series slurry pumps to service in various industries, help to reduce operation cost and down time. Applicable especially in slag delivery, dredging, coal washing etc.

Metallurgy

Large passage, excellent anti-cavitations performance, diverse wear-resistance material options plus lower turning speed, enhanced shaft design together with rigid bearing make WG(H) pumps are the best choice for slag delivery in metallurgy applications.



Dredge

Large passage, excellent anti-cavitations performance, small size and discharge pipe's 360° fitting position make WG(H) pumps very popular in gravel and dredging applications.



Tunnel Construction

Could be used as earth removal pumps along with TBM (Tunnel Boring Machine), to pump earth and rocks out of tunnel construction site.

The large passage is capable of conveying large sized rocks, and the excellent performed wear resistance material could handle heavy abrasion of the high speed rocks.



Coal Washing

In the process of coal washing, WG(H) pumps are widely used for delivering lump coal because its wide passage, rigid casing to deal with high pressure.

