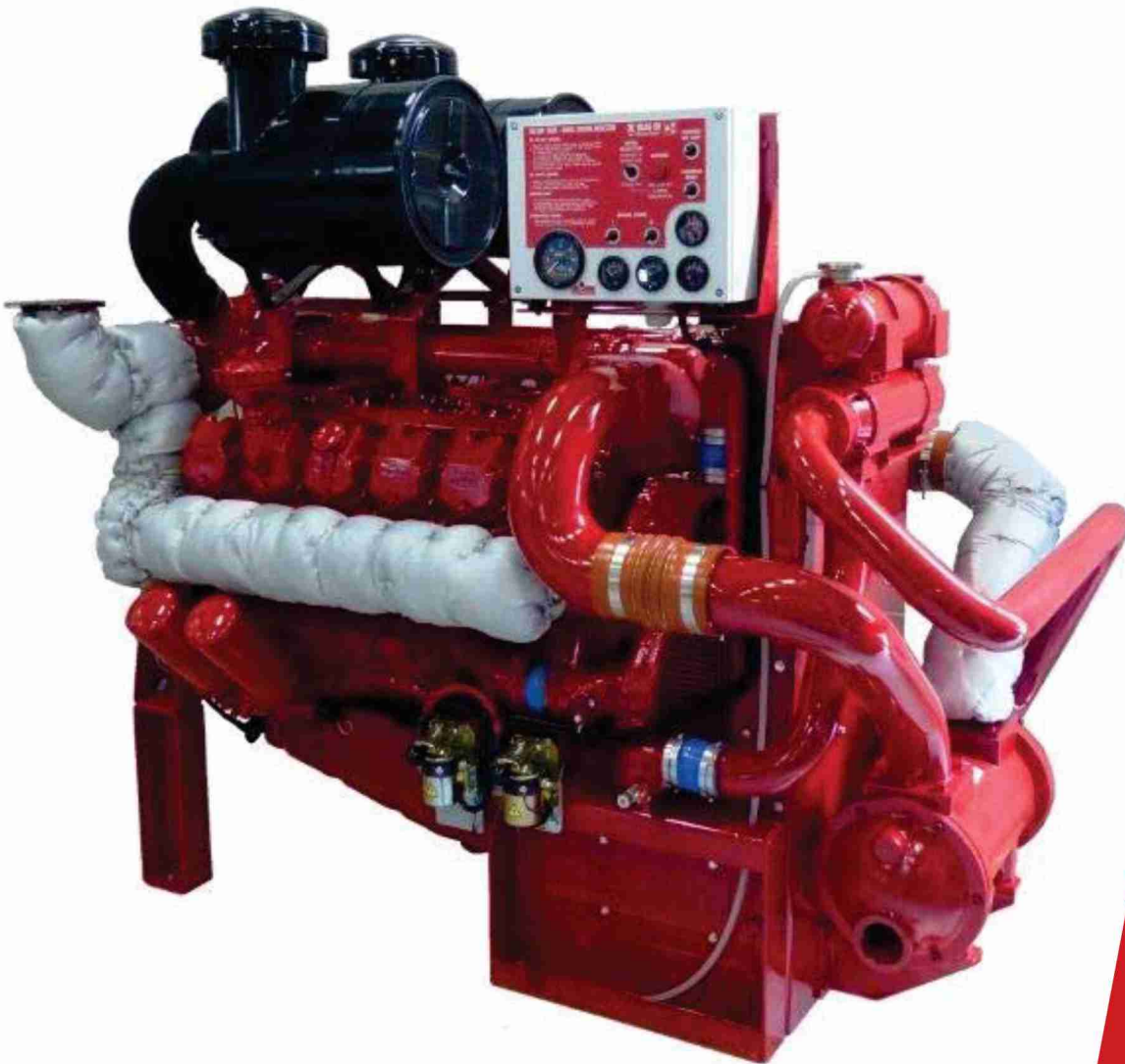




VERSA[®] ENGINE

DIESEL ENGINE



VERSA ENGINE stands for quality, efficiency, performance and delivery.

VERSA ENGINE is your confidence Diesel Engine for :

- * Fire pump drivers
- * General Industries
- * Agriculture / Irrigation
- * Municipal
- * Oil & Gas Field
- * Marine / Shipping

Bringing together a mix of international design expertise with years of engineering experience, extensive research and advanced manufacturing facility, **VERSA** translated into a range of products that are here to stay.

The knowledge gained by the research and expertise, has resulted in the development of Premium Quality, Cost Efficient, Performance Oriented, High Speed Diesel Engines, with a wide range of Power.

VERSA is a symbol of trust for all **VERSA ENGINE** installations. It is manufactured in accordance to **NFPA 20** standards, and has passed all tests and criteria of the **FM** requirements, in our **FM Approved** manufacturing and testing facility.

